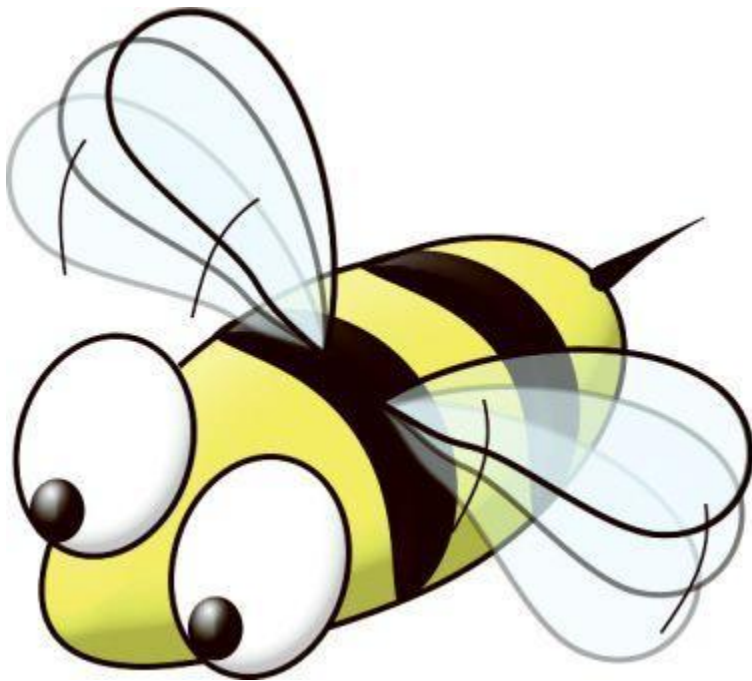


CAHCF/CCAL

Connecticut Association of Health Care Facilities
Connecticut Center for Assisted Living

Connecticut Association of Health Care Facilities / Connecticut Center for Assisted Living
213 Court Street Suite 202
Middletown, CT 06457
860-290-9424 (tel); 860-290-9478 (fax); www.cahcf.org (website)



Legislative Alert

November 27, 2023

It's the **BUZZ-Bee**. Please pay close attention! This email is for **Administrators ONLY**. It is imperative that we have everyone's participation in these **Legislative Visits!!!!**

Our 2023-2024 **Legislative Initiative** is now beginning, and we need you to schedule legislative visits with your State Senator and State Representative as soon as possible. Information is currently posted to the **Grassroots** page of our website at <https://www.cahcf.org/legislative/public-acts/> (or from the Home page; cursor over the

blue LEGISLATIVE tab; scroll down the list and left-click on the Grassroots / Public Acts / Other information tab).

At your earliest opportunity, please send an invitation to your State Senator and State Representative using the **CAHCF/CCAL VoterVoice app**.

From the **Grassroots / Public Acts / Other Information** page of our website, open the Sample letter (SEE attached also). Update all highlighted areas with your specific information. Final product should NOT have any BOLDED information. Keep this document open.

From the **VoterVoice: Action Center** page of our website at <https://www.votervoice.net/CAHCF/0/home> (or from the Home page; cursor over the blue LEGISLATIVE tab; scroll down to the first item and left-click on the VoterVoice: Action Center tab) under **Find Officials** enter your Zip Code and left-click on the arrow. Enter street address and left-click on the arrow again. VOILA! A Directory of all your elected representatives will appear including your State Senator and State Representative. Left-click on both your State Senator and State Representative. Left-click on **Compose Message**.

In the **Subject box** enter, "Please Visit Our Nursing Facility".

In the **Body box**, cut and paste the body from your Sample Letter including your identification at the end of the letter.

In the **Enter Your Info** section, complete all boxes.

Left-click on **Send Message**.

The above has been tested on Rick, and if he can do it, YOU can, also! Need assistance? Contact Adriana at 860-290-9424; amanning@cahcf.org.

Thanks.

PRIVILEGED CAHCF/CCAL MEMBER COMMUNICATION – For CAHCF/CCAL Members ONLY.

CONFIDENTIALITY NOTICE: This e-mail may contain confidential information. If you believe that you have received this e-mail in error, please notify us by reply e-mail at your earliest opportunity and then DELETE the original and reply e-mail. Thank you.